



# SPARE TYRE

JAN - MAR 2018

MELBOURNE BRANCH WEB SITE :  
WWW.ULYSSESMELB.COM



## VSK A GREAT SUCCESS!



What a glorious spring day! The outfits all polished, the guests in their Christmas best, the parents relaxing from the pressures to get there and the volunteers busy putting together all the ingredients for hungry growing little monsters. Even Santa looked happy as VSK Day swung into action.

The previous wet, cool years were forgotten as riders and their charges whooped around the Sylvan dam. The face painting stall was in heavy demand from young faces all wanting their hero's image or a fearsome visage to frighten siblings. Even some parents got in on the act. Clown, magician, sausage, lollies and soft drink ensured all were happy and full.

Doncaster BMW's generous donation ensured a great day was had by all.

Thank-you to Doncaster BMW, the riders who volunteered rides, the volunteers who manned the food stall and BBQ and the parents and kids. It was a GREAT VSK DAY!

## A NEW YEAR IS UPON US

2018 crept up and if you are like me any resolution is bound to collapse after its initial enthusiasm. So it was with the first morning's vigorous walk never to be repeated again and the "pushie,". Staying on its hook. Tyres are pumped up though.

But, our calendar for the first quarter has interesting destinations and tempting weekends away enough to overcome any failing resolution. Asking our partners to join us for lunch at Walhalla is indicative of the continual change that ensures the vibrancy that members bring to Ulysses. Bring along your mates on these rides and when they are introduced to the camaraderie and a great ride will surely consider becoming a member themselves.

Don't forget the Saturday Morning coffee stop at the Bakery in Bay Road Port Melbourne or our third Friday monthly dinners at the RSL East Malvern. Your friends are welcome to join us at these gatherings.

Finally, our branch AGM is in February and will be held on **Sunday 25 February 2018**, at the Mount Waverley Youth Centre, 45 Miller Crescent, Mount Waverley, (next door to where we were last year) Melway 70 E1, 10am for a 10.30am start. Your contribution by standing for committee ensures that continual change and improvement is important to keep Melbourne Branch alive and growing.

As Editor, I wish to thank you all for keeping the magazine alive and while it is being overtaken by blogs, Facebook and other electronic messaging systems it reflects a time where immediacy and the need to be continually up to the minute was not that important! So, put the kettle on, or 'neck a stubbie,' relax and have a quiet read to enjoy the writing of your fellow members and their travels.

The Spare Tyre also needs change and while I am happy to continue in the role, maybe there is one of you out there who would like to have a go to put your touch to the life of being a Melbourne Branch Ulysses contributor, thus continuing to the change and growth of this riding group.

### INSIDE... ..

- Ride Reports
- Social events
- Ride Calendar

Thanks to all those who take the time to do ride reports and post photos on the website. - it makes "stealing the photos" for the Spare Tyre very easy for me.....



# **VSK DAY 2018**

## **A BUSY FUN DAY FOR SOME SPECIAL KIDS AND THEIR FAMILIES**



Anita, on salad duties.



Butter wouldn't melt in their mouths.



Andrew & John with the Chinese Ural  
awaiting passengers.



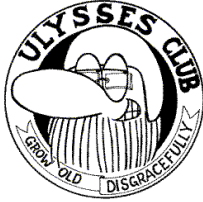
What every child enjoys, MAGIC!



It's the ride mum not the destination



Kitting out is this easy, riding gear all set.. Where's the bike?



## 2018 NOMINATION FORM – Ulysses Club Inc Melbourne Branch

I, .....Ulysses Member No .....,  
do hereby **nominate** .....  
Ulysses Member No .....,  
for the position of .....,  
on the Ulysses Club Inc Melbourne Branch Committee 2018.

*Signed*..... *dated*.....

---

I..... Ulysses Member No ....., do hereby **second the nomination** put forward by.....  
.....to nominate .....  
for the position of .....  
on the Ulysses Club Inc Melbourne Branch Committee 2018.

*Signed* ..... *dated*.....

---

I, .....Ulysses Member No .....,  
do hereby **accept the nomination** put forward by .....  
and seconded by .....  
for the position of .....  
on the Ulysses Club Inc Melbourne Branch Committee 2018.

*Signed* ..... *dated*.....

**Completed forms signed by nominator, seconder and nominee should be delivered to branch secretary by 25 January 2018**

Suzanne Clarke – [suziehawks@bigpond.com](mailto:suziehawks@bigpond.com) or PO Box 3014 Rowville 3178

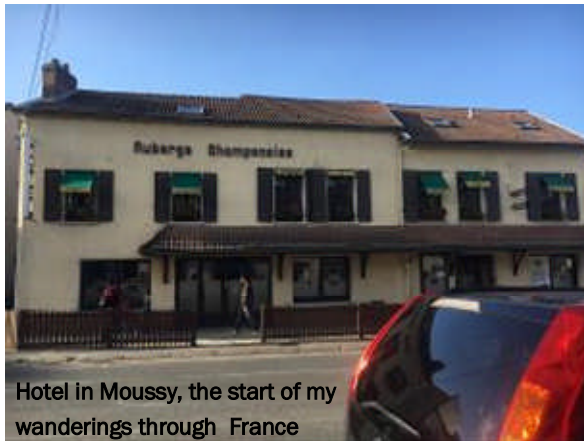




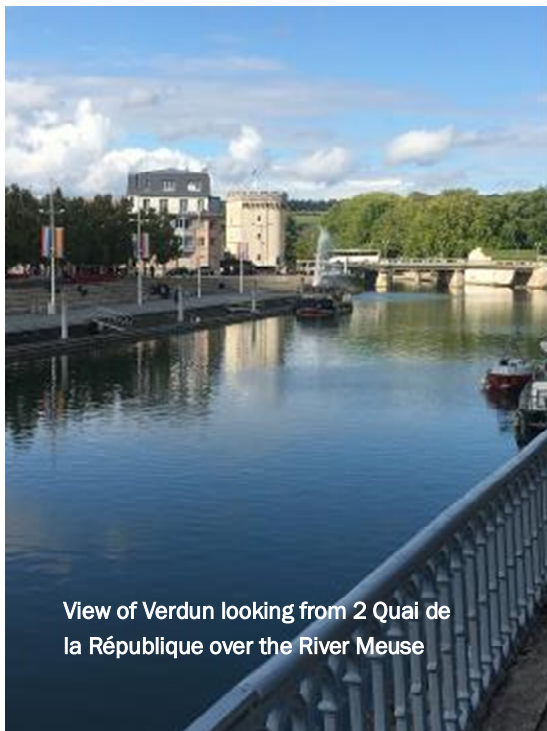
**Photos From Greg Gleason's  
September 2017 Ride**

**"A Tale of Two Mountains."**

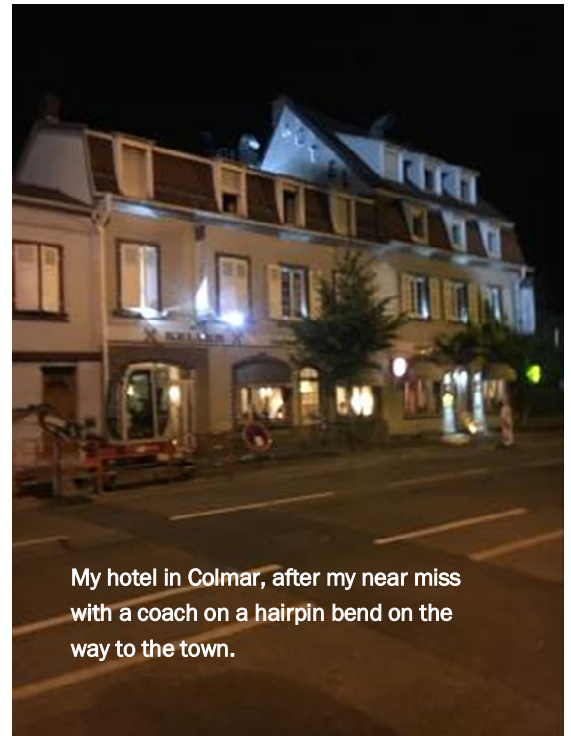
Images from Greg Gleason's side trip through France. His story was featured in the October 2017 Spare Tyre. Unfortunately, the photos arrived after the issue had been completed. They are published here reflecting the journey that was an adventure while the scenes depicted show life's normal side of picturesque touring. It is worth re-reading Greg's tale with these visuals in mind.



Hotel in Moussy, the start of my wanderings through France



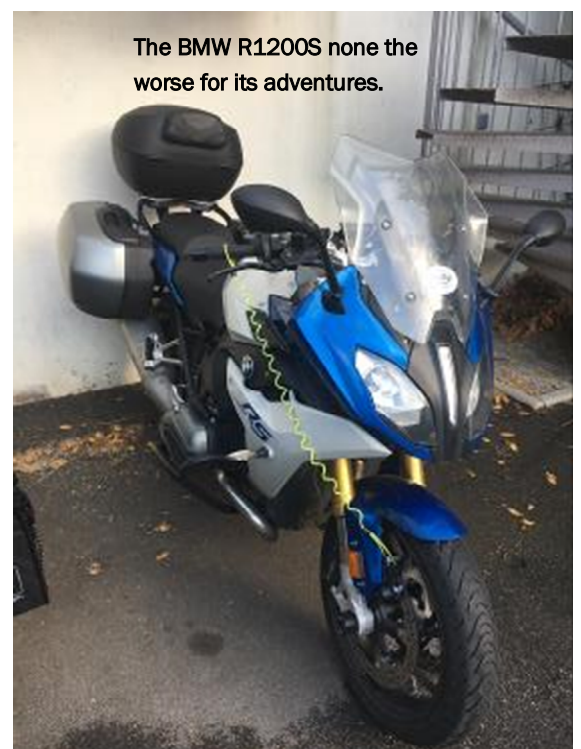
View of Verdun looking from 2 Quai de la République over the River Meuse



My hotel in Colmar, after my near miss with a coach on a hairpin bend on the way to the town.



Street scene Rue Vauban, Colmar



The BMW R1200S none the worse for its adventures.

**RIDE REPORT : LILYDALE TO EILDON. 22 OCT 2017**  
**RIDE LEADER : JACK FEI**  
**REPORTER : JOHN COOK**  
**CORNER MARKER: STEVE BAILES**



## SPRING COMES LATE TO EILDON

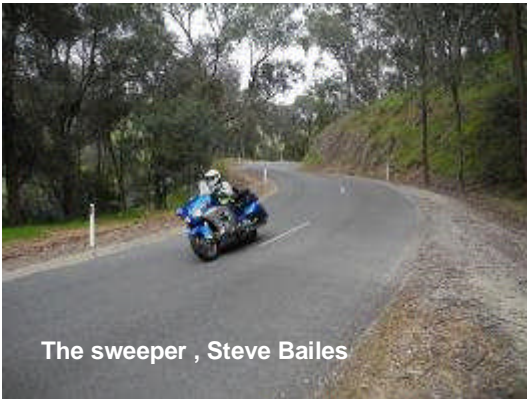


Healseville and wet coffee stop

The ride calendar predicted an enjoyable ride as the weather started to warm up!

A small group arrived at Lilydale to join Jack on his well planned ride despite the rather wintry conditions and many electing either The Island or the TV for the Moto GP. Gaz brought his mate "Steve" from NSW, who was riding a Super Teneré, Les tracked all the way across Melbourne to Lilydale, Steve B volunteered to do TEC duty and I had a very short run from home. I won't name the wimp who turned up in a car to wish us well!

It was quite cool with a hint of drizzle, so we all dressed appropriately and headed off under foreboding skies to Yarra Glen before crossing back to Healesville. The scenery and roads were great but the weather couldn't make up its mind. We then climbed from Chum Creek up to Toolangi and disappeared into the cloud (fog?) and **successfully seeded the clouds to ensure it actually rained properly!** The loss of visibility was matched by a significant drop in temperature. Fortunately, things improved by the time we descended to the Melba Highway and by the time turned off at Glenburn towards Break O Day the roads were actually dry. The sun broke through and the temperature increased, traffic was very light and the countryside looked great and exceptionally green as we enjoyed the ride into Yea where we stopped for an enjoyable chat in the sun at a picnic table.



The sweeper, Steve Bailes

During this chat it was decided that we would not actually stop at Eildon as originally planned but that did not change the route. We headed out and enjoyed the ride across the back road from Molesworth to Alexandra and continued up towards Fraser National Park. We then enjoyed the road and views along the skyline road to Eildon and continued on through Thornton and then on towards the Black Spur in dry sunny conditions.



Ride Leader, Jack, relaxes at Yea

Having already experienced two version of "spring" weather", the clouds resumed as we approached Narbethong we got to experience more rain as we crossed the Spur into Healesville where we stopped for lunch and an enjoyable chat at a relatively early time. Then it was off home in plenty of time to watch the Moto GP.

Jack, thanks for the great ride, I actually enjoyed it and the company.



link: <https://www.mccruise.com> Contact Phone +61398082804



**RIDE REPORT : SNOWY RIDE 2017**  
**RIDE LEADER : ROGER FOOT**  
**REPORTER : GREG GLEASON**  
**TAIL END CHARLIE :**



### Ulysses Club Melbourne Branch Ride Report Snowy Ride 2017.

#### Participants:

Roger Foot (Leader) – Honda VFR800  
 Sam Bateman – Honda VFR800  
 Samuel Sun – BMW R1200GS  
 Colin Voss – Aprilia Caponord  
 Phil McMillan – BMW 800GS

Jack Fei – BMW R1200RT  
 Stewart Tepe – Honda Shadow 750  
 Shane Dwyer – BMW R1200 GS  
 Alf Dennemoser – Kawasaki Versys 1000  
 Greg Gleason – BMW R1200 GSA

#### The Ride to Thredbo:

There is an annual charity ride known as the Snowy Ride which takes place every November in the Snowy Mountains of NSW. Based around Jindabyne and Thredbo there are rides to lots of towns in the region with areas in each town set aside for rider check-ins, refreshments and other motorcycle activities. A total of 2,097 riders and pillions from all states attended this year. The ride raises money for the Steven Walter Children's Cancer Foundation to aid research and is organised by the Walter family who lost their son to this insidious disease at the tender age of 19 after an eight year battle with Ewing's Sarcoma. This year was the 17<sup>th</sup> ride and raised in excess of \$200,000 for research. Go to <http://www.snowyride.org.au/> if you want more details and perhaps to get some ideas for joining next year's ride.



What it's all about Australia's high country

We headed off on the Thursday morning, one group of 6 meeting at Yea at 8.30 (and enjoying 2 hours of solid rain getting there, before it dried up till our trip home) and the other group of 4 leaving via Gippsland. Group 1 went over the Whitfield Gap to Myrtleford for lunch, then across Hotham and down to Omeo (to meet up with group 2 staying in Omeo) before heading to the Blue Duck Inn at Angler's Rest for the night.

We rendezvoused next morning at Angler's Rest and headed off to Tallangatta, Corryong and Khancoban, before crossing the Snowy's at Dead Horse Gap to the south of Thredbo. The scenery (when you get a micro second to look at it) is awesome!! Sam Bateman – "If you look too much at the scenery, you end up in it!!" and Shane Dwyer – "Scenery? Great – 40km long and 1 metre wide – loved it!!"



Spaghetti Bolognese and no ill effects

We passed one "incident" with a Harley off the road in the muddy drain and the rider laying prone on the other side of the road. There were plenty of helpers so we didn't stop. . We came across the Harley on a trailer in Thredbo later and were told the rider was eventually helicoptered out as he wasn't feeling too flash and the ambo's got a bit worried about him.

#### The Snowy Ride & Our Trips:

Our accommodation at Bernti's Brasserie, Bar & Chalet in the heart of Thredbo Village was superb – the rooms, the food and the service were excellent. The views up Thredbo's legendary ski slopes (still loaded with snow almost to road level) were very easy to take.

We lost no time after breakfast and were promptly off to Dalgety for a ride check in and coffee. Great roads and we followed on to Berridale and then to Cooma – another ride check in, embellished by 2 factors – the willingness of the checkpoint people to put every possible stamp on our cards and the presence of the Australian Busking Championships! The town was filled with street buskers on every corner and tourists in their hundreds listening, many of whom appeared to be "normal" people, not motorcyclists.

There was a big Car Show at the Sports Complex in Cooma – cars and bikes of any and all types – well worth the hilly walk to see it!!

Realising we needed all the energy we could muster for Sunday's ride, someone foolishly nominated Greg to cook

**RIDE REPORT : SNOWY RIDE 2017**  
**RIDE LEADER : ROGER FOOT**  
**REPORTER : GREG GLEASON**  
**TAIL END CHARLIE :**



for Group 1 and wisely Jack to cook for Group 2 on Saturday night. It turned out we all shared and no-one took ill from Greg's Spaghetti Bolognese. Jack attracted significant praise for his Stir Fry and Fried Rice!!

After another good night's sleep (for some – "snoring? I didn't hear any snoring!!") we headed out early. A ride to Adaminaby (or is it "Adaminaminaby, Sam B?) saw us at the Snowy Hydro Scheme Museum – a film about the project and displays of all manner of project memorabilia impressed the group. From here we headed off to Charlotte Pass (the highest road destination in Australia) and were even more impressed – by both the great motorcycling roads and the incredible views from the top!!

### **The Ride Home:**

"Into every life, a little rain must fall" says the old proverb, and we got proverbially drowned and chilled between Thredbo Village and Bombala. Samuel and Jack had wisely decided to go back over the mountains to Khancoban and take the Hume Highway home. For the rest of us it was a tough test of the waterproofing and thermal properties of our riding gear. Alf was virtually hypothermic by Bombala stage and retreated to dry off at the local hotel, making his own way home the next day. The remainder made Orbost as the rain started to ease. The remaining 7 settled in to the Commonwealth Hotel, some enjoying a nap, some breaking open some tawny port and some taking a walk around town (a short walk, as you might imagine) and along the Snowy River nearby. Our riding gear was variable in its ability to keep us warm and dry, but Stuart had no complaints about his cheap rain suit which performed much better than the expensive specialist gear.

The pub food was good, but the jukebox was better!! We heard so many "blasts from the past" I actually began to realise how old I really am!! Mildly depressed, I headed off for the comfort of a warm country pub bed. I awoke next morning to an eerie silence – it took a moment to realise it was the sound of NO rain on the roof!!

A relatively dry road was encouraging – no more than a few drops here and there. At Stratford, Greg peeled off to go home highway bound while the others headed for Heyfield and more interesting roads beyond. Along the way, others progressively peeled off as home approached. The group shared e mails to confirm safe arrival home for all concerned.



**The riders cold, happy and wouldn't be anywhere else!**

### **Appreciation:**

As "reporter at large", I wish to record the following:

- Appreciation to Roger Foot – leader and ride mastermind
- Thanks to Sam Bateman whose local knowledge saw him as pathfinder for parts of the road we didn't know (and at times, visibility was pretty ordinary.....)
- Warm thanks to the other 9 riders who tolerated my toying with Go Pro footage and who ate my Spaghetti Bolognese with a smile.

It would be remiss of me not to note how well the group interacted. The entire trip was typified by courtesy, respect, good humour and great fun. It made the trip as good as I have done, and I trust the others, like me, appreciated how good the group dynamics were, both on and off the road.

Roll on 2018!!

**Greg Gleason 065231**

**RIDE REPORT : LILYDALE TO YEA 26 NOV 2017**  
**RIDE LEADER : JOHN COOK**  
**REPORTER : JOHN COOK**  
**CORNER MARKER : NONE**



***“Secret Honda Business”***

Our Ride Coordinator, Pat must have known something as he asked me to swap ride dates (for some alleged social reason) so I said “Yes, I’ll lead the ride on 26 November”.

As the date loomed, the bureau started issuing forecasts warning of lightning, rain thunder, storms and similar unpleasant conditions. What could I do? I had agreed to do it and apparently the show must go on.

I arrived at Lilydale hoping that no one else would be there and that I could turn around and go home. It was not to be.

Three (fool) hardy Honda riders had turned up to join me as I had advertised the route as including some roads that had never previously been used on a branch ride. They were Marty (Blackbird), Mike (VFR1200), Steve (Goldwing) plus me on my old ST 1300. After a convivial chat including a discussion on the general stupidity of Honda riders, we dispensed with the usual protocols of corner markers and headed off out through Gruyere in reasonable weather with the odd bit of damp road. We enjoyed views over vineyards and some very tight bends around the back of Coldstream before doubling back to St Huberts Road to make our way to Yarra Glen.

We took a series of tight roads to Hurstbridge (the route will remain a secret among this small group of Honda riders for now) and enjoyed some nice views, virtually no traffic and were challenged by some significant areas of rock over the road after the previous night’s deluge. From Hurstbridge, we enjoyed a nice run along the narrow back roads past Nutfield, Arthurs Creek and Yan Yean Reservoir before stopping for a coffee and break in the main street of Whittlesea.

Then it was up the lovely winding road (but now an 80 zone) to Kinglake West where we finally encountered some rain and wind. Continuing through Pheasant Creek (some patches of road were even dry along that section) to join the winding Kinglake Glenburn Road down to the Melba Highway and from there headed North. We then turned off and detoured via the hills around Murrindindi before re-joining the Melba and rolling into Yea well before 1.00 pm after doing around 160 km from Lilydale. The vast majority of the ride had been dry and we enjoyed lunch and a chat at one of the picnic tables on the median strip in the main street of Yea.

After lunch we all headed back towards Whittlesea and enjoyed that lovely climb with virtually no traffic before I bid farewell and turned off towards Break-O-Day and the others continued on towards the northern areas of Melbourne.

My luck with the weather ran out about then and it started raining rather heavily. Fortunately it was not cold. By the time I got home, I discovered that my ancient mesh jacket’s waterproof lining wasn’t (waterproof) and found a rather large wet area around the bottom half of my T shirt. Oh well, I do have a new water proof jacket ready to go. It was more galling to discover the classic wet groin area. I’m not sure if that was the result of gravity or if my waterproof over pants also need replacing - Grrr!

All that aside, I would like to say many thanks to those who came along and I enjoyed the ride. For those who took notice of the forecasts and stayed home, you will have to look out for next “Yea” ride to discover the route we took.

## ***Sponsors’***

We would like to thank the sponsors for their financial support which enables the branch to publish this newsletter, our webpage and also contributes significantly to the cost of running our day for

Very Special Kids.

These businesses support us in many ways and most offer discounts to Ulysses Club members, so we urge you to show your support and consider these businesses when looking for accessories, bikes, clothing, parts and or servicing.

	<p><b>5 HEATHERDALE ROAD</b>  <b>RINGWOOD [03] 9870 3807</b></p>
--	--



**RIDE REPORT** : **ARDEER TO LORNE 10/12/2017**  
**RIDE LEADER** : **PAT RYAN**  
**REPORTER** : **PAT RYAN**  
**CORNER MARKER** : **BILL DUSTING**



## **To Lorne Without Bathers**

Having successfully swapped ride dates with John Cook who got the wet day the other week, I set out for Ardeer in fine weather with no prospect of rain. This was a most unusual occurrence for my Lorne ride, as it usually rains or blows a gale or both.

The good weather brought out a fine selection of riders with the Gary, Gaz, Les, Colin, Nick, Greg, Jack, Martin, Andrew, Vince, Bill, Pat and Michael from Ballarat Ulysses who joined us at morning tea. Apologies to any other riders who have slipped my mind momentarily.

I scouted the infamous "Jump up" during the week to see if we might vary the route a bit but found the surface so badly broken up that we were better off going the usual way. Off from Ardeer and up Ballarat Road then into Leakes Rd, Greig's Rd and down the Geelong Ballan road then Granite Rd where we headed up towards Anakie. From here the road gets a bit more interesting as it winds through the Brisbane Ranges up through Steiglitz to Meredith. Quite a bit of new surface here was a bonus and we made good time.

Meredith was pretty busy as the Meredith Music Festival was on and they expected some 5,000 people to arrive. After coffee and a chat we headed out towards the festival but thankfully our turn off was well before the busy area. We did however come across Victoria Police happily breath and drug testing people coming from the festival but they left us alone as we went past.

The next section is quite scenic through fields where hay has been recently cut and lots of cattle and sheep graze. Even saw a herd of my favourite Belted Galloways. Through Shelford, Inverleigh and Winchelsea and onto the Deans Marsh Road which takes us on a winding route through the Otway ranges to Lorne. Traffic was not too bad and we had no real hold ups on this section. The road from Inverleigh is quite winding and high speed but the speed limit has recently been reduced to 80kph on part of it for no apparent reason. Young Vince got a rush of blood here and zoomed past me (I was only doing 100kph) and took off. He said later that he did not see me???

Bill had suggested an extension of the ride so Bill, Colin, Greg and I had lunch and rode off up the Great Ocean Road and on to Queenscliff where we caught the ferry across to Sorrento and came home from the other direction. Great idea as we got a short cruise and dodged the Geelong Road which is never any fun, especially on a Sunday. Michael headed back to Ballarat, Jack tried the Deans Marsh Road in the reverse direction and the rest went up the Great Ocean Road and home via Geelong Road.

All in all a pretty good day for a ride which has something for everyone.

**RIDE REPORT : DANDENONG TO DROUIN 31 DEC 2017**  
**RIDE LEADER : BRIAN LACEY**  
**REPORTER : JOHN COOK**  
**CORNER MARKER: BILL DUSTING**



### *Farewell 2017*



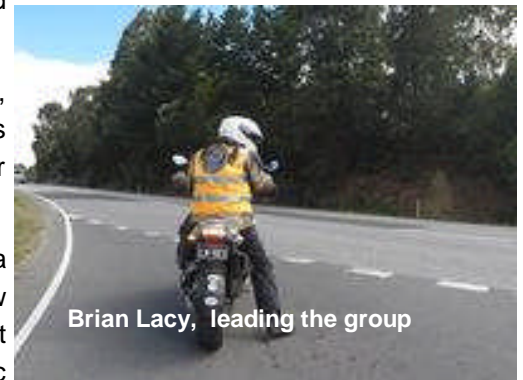
Dandenong before the start

We don't normally schedule a ride between Christmas and New Year. In December 2017 we seemed to have had more than our fair share of damp Sundays. Brian Lacey found that he had a free day on New Year's Eve and that the forecast was for perfect riding weather. He popped a notice on the branch website with less than 24 hours notice and let it be known that he was heading out for a ride through Gippsland from Dandenong. Despite the lack of notice, five of us turned out to join him and we're glad we did. Bill volunteered to do tail end duties and we headed out with a minimum of fuss as we were all familiar with each other. The bikes were two very different BMWs, two old Honda "Pan Europeans", a Royal Enfield

500 Single and a Suzuki V Strom 1000.

Now I thought I knew most of the roads east of Dandenong pretty well, but Brian still managed to geographically challenge me by taking us along some roads, which I had never previously seen, through Upper Beaconsfield, north of Officer and then into Pakenham.

From there we headed south and I couldn't help but notice the name of a road as we approached Bayles; **Main Drain Road South** - now how imaginative is that! We then enjoyed a leisurely chat over refreshment at Bayles before riding off east and south via a series of lovely scenic (and at times bumpy & narrow) roads through places such as Athlone and Poowong East before arriving at Ranceby. We then rode north towards Warragul and it was very enjoyable doing that road in the opposite direction to the one I normally ride. The scenery was also great. Just before crossing the freeway, we turned west again and Brian led us along some more roads I had never previously ridden to Drouin where we stopped for lunch and another leisurely chat.



Brian Lacey, leading the group

The ride was only about 180 km which was just right and allowed us plenty of time to get home for the end of year festivities. I decided to ride home via Neerim South and Powelltown as conditions were perfect and I had the added bonus of encountering no traffic at all between those towns which made it one of those rides you can generally only dream about.

Brian - Many thanks for taking the initiative and then leading us on a great ride. Well done.



**What a way to end 2017, sun on the back, smooth running machine, road curving nicely.**

**HAPPY NEW YEAR!**



**IMAGES FROM  
PRESIDENT'S CHRISTMAS RIDE 2017**



## Social Events

The Melbourne Branch hosts one informal Social Night on the:

**3rd Friday of each month.**

**Commences from 6.00 PM**

**The East Malvern RSL, Stanley Grose Drive, East Malvern. (Melway 60 A12)**

The East Malvern RSL serves bistro meals at reasonable prices and also offers seniors' deals. Drinks can be purchased from the bar.

If you haven't been to one of our social night get-togethers for a while, consider giving this venue some thought. Come along and catch up on all the news and enjoy the company of your fellow Ulysseans. What makes these nights special is the camaraderie and friendship enjoyed by all who attend with much laughter and frivolity emanating from the various groups and tables. For new chums and first timers, introductions are made in the normal Ulyssean manner which ensures that nobody is left standing on the outer and everyone is made to feel welcome.

Join the chatter about motorbikes and bike trips, travel in general, and the usual odd joke etc. Someone always seems to have an Australian Road Atlas which is often referred to and it is heartening to note that some members don't mind a little embellishment to make their story more interesting. One should never let the facts stand in the way of delivering a good punch line or yarn!

These nights are not to be missed so pencil them into your social calendar and come along and enjoy the fun.

---

**Meet for a Saturday Morning Coffee at**

**Melbourne Bake House**

**210 Bay Street Port Melbourne,**

**Drop in for breakfast or just a coffee and a chat!**

**\*\* Plenty of bike parking available \*\***

---





## **THE COMMITTEE**

### **PRESIDENT: GREG REES**

Phone: 0416 109 933

### **COMMITTEE MEMBER : JOHN COOK (WEBSITE EDITOR)**

Phone: 9728 5769 or 0419 599 530

### **SECRETARY : SUZANNE CLARKE**

Phone: 0418 581 800

### **COMMITTEE MEMBER : BRIAN LACEY**

Phone:

### **TREASURER : MARYANNE TRIGGS**

### **RIDE CO-ORDINATOR : PAT RYAN**

Phone: 0412 223 146

Note : Committee members and Spare Tyre editor can be contacted by the "Contact Us" link on the web page

**For contributions to the Spare Tyre, please contact the spare tyre editor**

Got a funny story?? Something interesting you would like to share??

Something you want to advertise?? Please send it in.

Brian Quintal 0411 273 235 or 9555 8994

## RIDE CALENDAR : JAN - MAR 2018

Please refer to the website for any last minute changes..... [www.ulyssesmelb.com](http://www.ulyssesmelb.com)

EVERYONE WELCOME; Friends and family are most welcome to any ride or social event. All rides **start at 10am sharp** unless otherwise stated - Don't be late! For more information call the Ride Leader or our Ride Co-ordinator—Doug Shearer - 0418 984 791.

DATE	RIDE DESCRIPTION	CONTACTS
Sun, Jan 14, 2018  10:00am- 1:30pm	LILYDALE TO JERUSLAM CREEK  "SKYLINE ROAD", maybe part of the ride route.	Ride Leader John Cook  0419 599 530 or 9728-5769.
Sun, Jan 21, 2018  10:00am- 3:15pm	LILYDALE TO YEA  Commencing at Lilydale I thought it fitting that we should have Morning Tea and visit those magnificent Toilets*** (rather nice paper) in Broadford with a view to Lunching at Yea taking advantage of the rather austere but functional facilities** in Yea.	Ride Leader Steve Bailes: 0416 195 849
Fri, Jan 26, <b>9:30am</b>  Sun, Jan 28, 4:00pm	TALLANGATA- AUSTRALIA DAY WEEKEND  DEPARTS LILYDALE.  Heading the "shorter" way (not via Gippsland) across the North East with a latish lunch stop somewhere like Yackandandah.  I'll be staying at the Victoria Hotel both nights (02) 6071 2672 - Make your own accommodation arrangements direct.  Planned Saturday ride medium distance - Murray River Road, Granya Gap - Jingellic and Corryong before return to Tallangatta.  On the return ride on Sunday I may well be returning to family duties in Sale on the Monday. So that will be a ride via Mitta Mitta, Anglers Rest - Omeo etc.  Please let me know if you're coming	Ride Leader John Cook  0419 599 530.  <b><u>NB slightly early start time</u></b>
Sun, Feb 4,  10:00am - 3:00pm	Mike will take us down into Gippsland with morning tea at Noojee and finishing at the old gold mining town of Walhalla. There are lots of things to do in this picturesque little town with 20 or so residents so why not plan to stay on for a while after lunch or even get the family to drive down and meet you there for lunch	Ride Leader: Mike Fittall 0456 561 395  Check out what is on offer at the following link: <a href="https://www.weekendnotes.com/day-trip-walhalla/">https://www.weekendnotes.com/day-trip-walhalla/</a>

### LILYDALE:

Olinda Hotel, Maroondah Highway. Left hand side out-bound from Melbourne—100 metres from rail crossing.  
Melway 38 E4

### DANDENONG:

United Service Station on Princes Highway (next door to the old Safeway/Maccas Location, near the corner of Doveton Avenue Melway 91 B12

### ARDEER:

Seven 11 with a McDonalds, Western Ring Road. Left hand side out-bound from Melbourne. Melway 40 B5

### KALKALLO:

Caltex Service Station, Hume Freeway. Approx 1 km north of Donnybrook Road intersection.  
Melway Page 8



## RIDE CALENDAR CONTINUED : JAN - MAR 2018

Please refer to the website for any last minute changes..... [www.ulyssesmelb.com](http://www.ulyssesmelb.com)

DATE	RIDE DESCRIPTION	CONTACTS
Sun, Feb 11, 2018 - 10:00am - 1:30pm	<p>LILYDALE TO YEA</p> <p>This will be a second attempt at a ride which basically got "rained out" back in November 2017</p> <p>The ride will be relatively short but will include some roads less travelled and with plenty of bends.</p> <p><b><i>Morning refreshment break planned for Whittlesea somewhere</i></b></p>	<p>Ride Leader John Cook</p> <p><b>0419 599 530 or 9728 5769</b></p>
Sun, Feb 18, 2018 - 10:00am - 3:00pm	<p>DANDENONG TO SAN REMO</p> <p>Another good run from Greg taking us from Dandenong to San Remo (for optional Pelican Feeding and Lunch) with morning Tea at Korumburra.</p>	<p>Ride Leader: Greg Gleason</p> <p><b>0424 956 07</b></p>
Sun Feb 25, 2018 - 10:00am - 2:00pm	<p>Put this date in your diary. <b><u>10.00 AM for a 10.30 Start</u></b></p> <p><b><u>Mt Waverley Youth Centre, 45 Miller Crescent, Mount Waverley.</u></b> It is <b>next door to where we were last year.</b></p> <p>Nominations are open to all financial members of the Ulysses Club.</p> <p>Our president, Greg and our secretary, Suzanne will not be nominating for 2018 -2019 after many years of great service to the branch and it's members.</p> <p><b>It would be fantastic if we received some nominations from people new to the committee to bring in some fresh ideas so please give it some thought.</b></p>	

## DEPARTURE POINTS

<p><b>LILYDALE:</b></p> <p>Olinda Hotel, Maroondah Highway. Left hand side out-bound from Melbourne—100 metres from rail crossing. Melway 38 E4</p>	<p><b>DANDENONG:</b></p> <p>United Service Station on Princes Highway (next door to the old Safeway/Maccas Location, near the corner of Doveton Avenue Melway 91 B12</p>	<p><b>ARDEER:</b></p> <p>Seven 11 with a McDonalds, Western Ring Road. Left hand side out-bound from Melbourne. Melway 40 B5</p>	<p><b>KALKALLO:</b></p> <p>Caltex Service Station, Hume Freeway. Approx 1 km north of Donnybrook Road intersection. Melway Page 8</p>
---	--	--	---

## RIDE CALENDAR CONTINUED : JAN - MAR 2018

Please refer to the website for any last minute changes..... [www.ulyssesmelb.com](http://www.ulyssesmelb.com)

DATE	RIDE DESCRIPTION	CONTACTS
Sun, Mar 11, 2018 - 10:00am - 3:30pm	DANDENONG TO PAKENHAM  Greg will take us on a nice run through the winding and picturesque roads east of Melbourne with a stop for morning tea along the way.	Ride Leader: Greg Gleason 0424 956 078  Check out the route using this link <a href="https://www.motowhere.com/maps/route/Greg-G-Ulysses13">https://www.motowhere.com/maps/route/Greg-G-Ulysses13</a>
Sat, Mar 24, <b>8:00am</b> -  Sun, Mar 25, 4:30pm	<b>Melbourne Branch Autumn Alpine Tour - Formerly known as The Ice Run.</b>  <b><u>NB Special Start time 0800 sharp on Saturday and location</u></b> BP Outbound Pakenham Bypass - 5 KM east of Clyde Road .  Day one may be up to approx 560 km run up the Omeo Highway, then via Mt Hotham or The Blue Duck up to Falls Creek. I may vary the route between Omeo and Howmans Gap subject to conditions on the day <b><u>but my preference will be the shorter (but windier) route via Anglers Rest</u></b> if possible.  Quite a sizeable group will be meeting us at <b><u>Bruthen for a hopefully early lunch.</u></b>  Overnight stay is at <b><u>Howmans Gap YMCA</u></b> (5 km from Falls Creek) in bunk rooms. Full dinner, bed, bedding and towels followed by substantial breakfast is included in price of <b><u>\$90 per person</u></b> payable at the venue  Great camaraderie in large dining room plus adjoining lounge with fireplace to sit before and exchange some disgraceful lies over a drink. <b><u>BYO drinks.</u></b>  Day Two also has some great roads returning via Myrtleford, Oxley, Whitfield, Tolmie & Mansfield distance approximately 400 km. This may vary depending on circumstances on the day.  Total distance for 2 days is approximately 960 kilometres. <b><u>I allow for approximately 7 hours riding and 2 hours of rest stops on day one.</u></b>  <b><u>THIS RIDE IS NOT FOR THE INEXPERIENCED OR EASILY FATIGUED.</u></b>	Ride Leader John Cook  0419 599 530 or (03) 9728 5769  <b><i>NB: If you intend to come please let me; John Cook know by 16 March 2018 at latest so that catering can be arranged.</i></b>  <b><u>NB: No last minute roll up as I need firm numbers for catering.</u></b>

### DEPARTURE POINTS

<b>LILYDALE:</b>  Olinda Hotel, Maroondah Highway. Left hand side out-bound from Melbourne—100 metres from rail crossing. Melway 38 E4	<b>DANDENONG:</b>  United Service Station on Princes Highway (next door to the old Safeway/Maccas Location, near the corner of Doveton Avenue Melway 91 B12	<b>ARDEER:</b>  Seven 11 with a McDonalds, Western Ring Road. Left hand side out-bound from Melbourne. Melway 40 B5	<b>KALKALLO:</b>  Caltex Service Station, Hume Freeway. Approx 1 km north of Donnybrook Road intersection.  Melway Page 8
---	---	---	---



**RIDE CALENDAR CONTINUED : JAN - MAR 2018**

Please refer to the website for any last minute changes..... [www.ulyssesmelb.com](http://www.ulyssesmelb.com)

DATE	RIDE DESCRIPTION	CONTACTS
Sun, Mar 25, 10:00am - 4:00pm	<b>## 2018 Meet and Greet at Vaughan Mineral Springs Park</b>  Branch ride details still to be confirmed. Will probably depart Ardeer.  For those not attending the Melbourne Branch Alpine Tour (formerly known as the Ice Run)  The Geelong Branch will be hosting and catering the 2018 Meet and Greet at Vaughan Mineral Springs Park, Vaughan near Castlemaine.	<b>If you are able to lead this ride then please contact Pat Ryan</b>
<b>DEPARTURE POINTS</b>		
<b>LILYDALE:</b>  Olinda Hotel, Maroondah Highway. Left hand side out-bound from Melbourne—100 metres from rail crossing. Melway 38 E4	<b>DANDENONG:</b>  United Service Station on Princes Highway (next door to the old Safeway/Maccas Location, near the corner of Doveton Avenue Melway 91 B12	<b>ARDEER:</b>  Seven 11 with a McDonalds, Western Ring Road. Left hand side out-bound from Melbourne. Melway 40 B5
		<b>KALKALLO:</b>  Caltex Service Station, Hume Freeway. Approx 1 km north of Donnybrook Road intersection. Melway Page 8